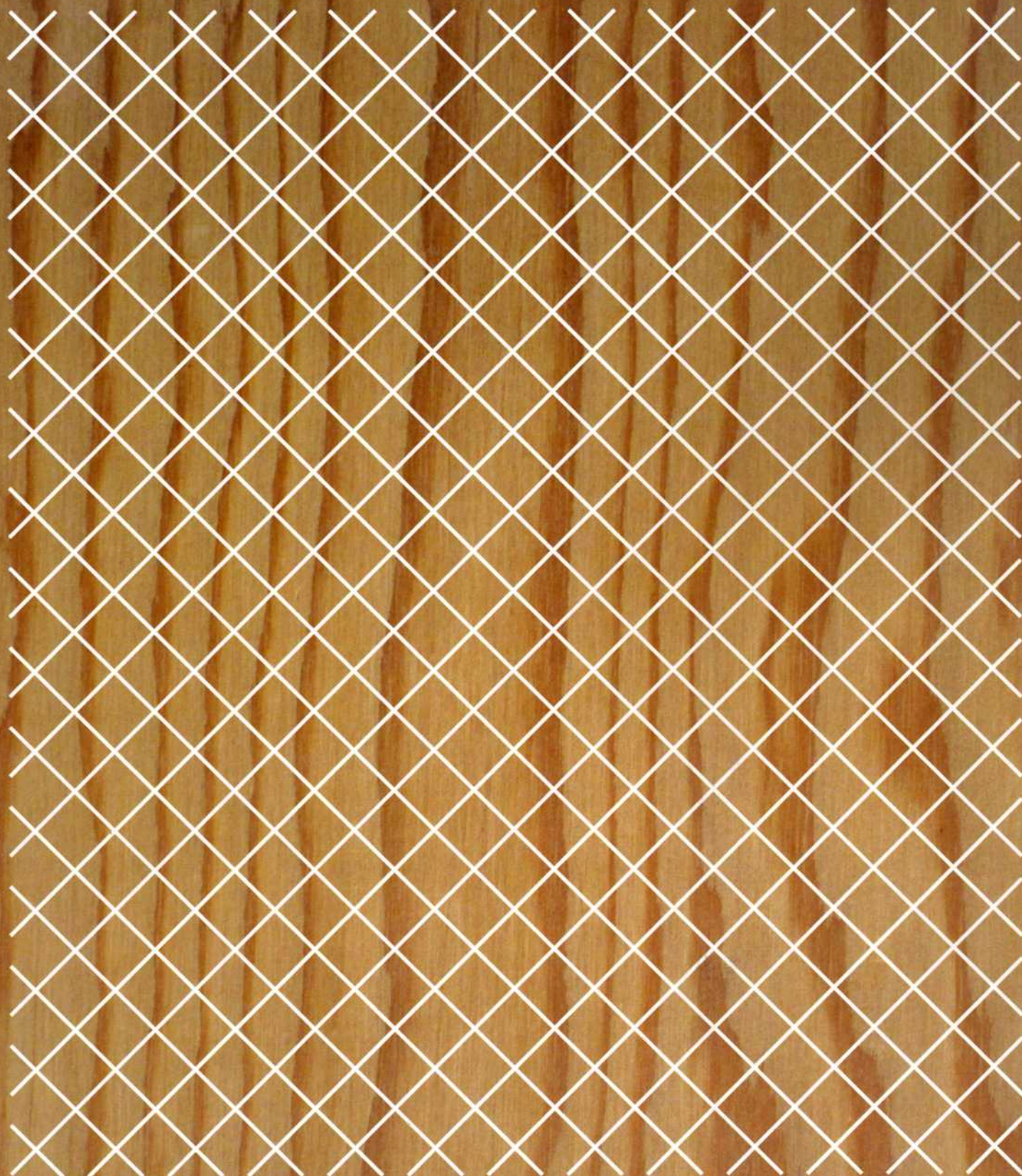


Wallpaper*

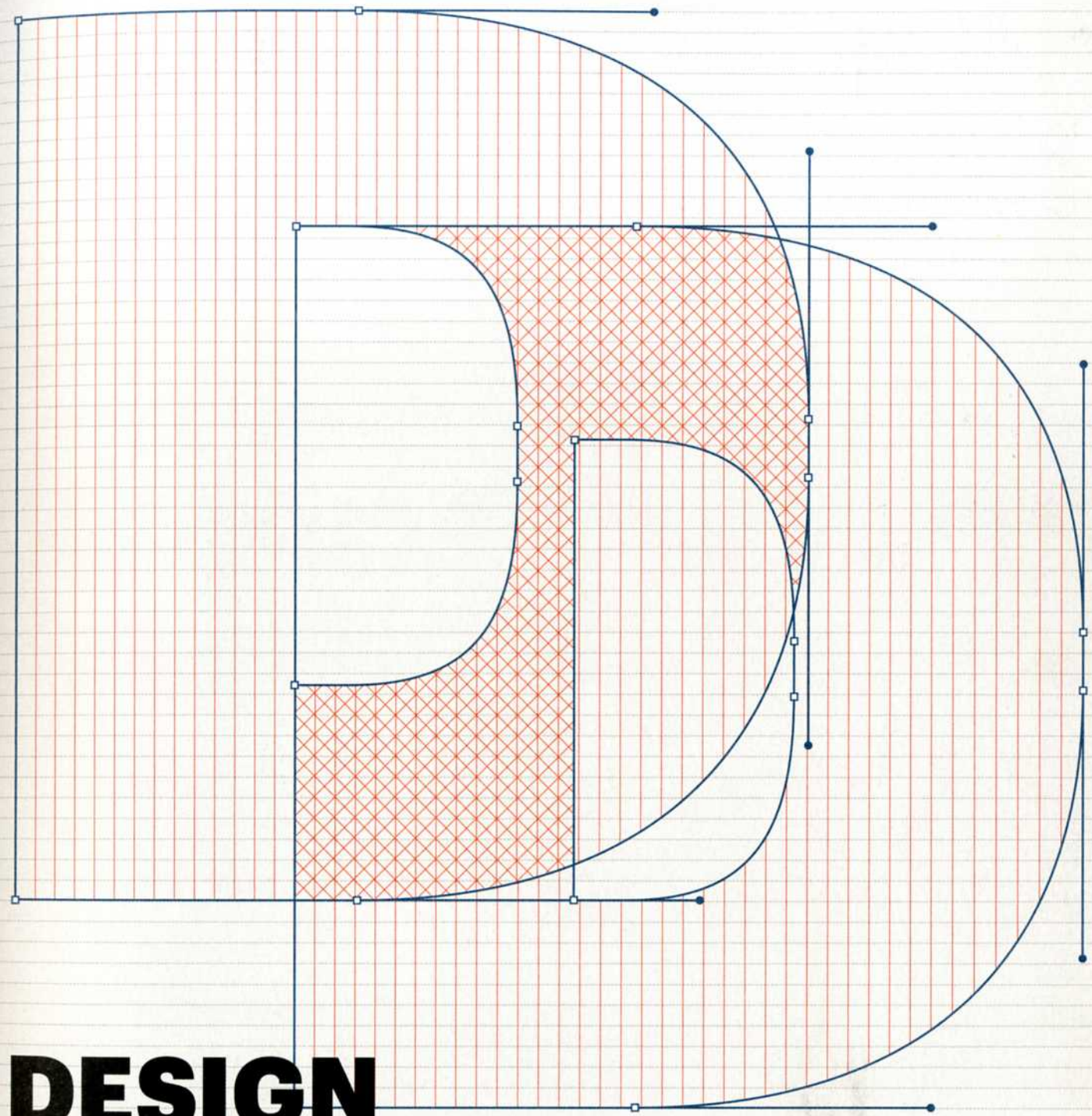
JULY 2010

*DESIGNINTERIORSFASHIONARTLIFESTYLE

UK £4.50
US \$9.50
AUS \$10.50
CDN \$10.50
DKK 75.00
F €8.50
D €10.50
NL €8.50
I €9.00
J ¥1740
SGP \$18.20
E €8.50
SEK 75.00
CHF 16.00
AED 45.00



LIMITED EDITION COVER
BY JASPER MORRISON



DESIGN DIRECTORY 2010

Age rarely gets in the way of good design. For this year's Architects Directory, we sought out the world's hottest young practices, who each devised a conceptual home to make clear their M.O. Meanwhile, furniture by the elder statesman of midcentury design, nonagenarian Jens Risom, is back by popular demand, and vintage classics are inspiring the next generation of interior pioneers. Here's the year's best design

060 Architects Directory

068 Jens Risom reissued

106 Screen debut

The W* House

073 Living room

077 Dining room

081 Outdoor

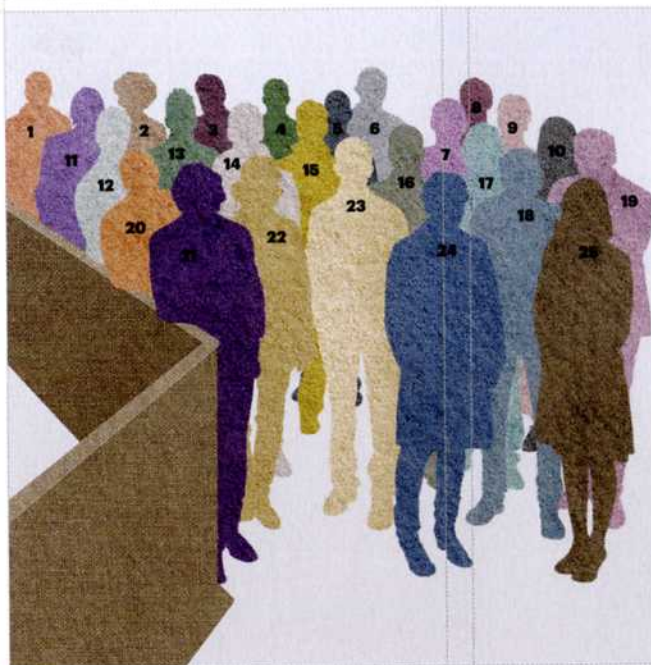
085 Bedroom

089 Hallway

091 Study

095 Bathroom

099 Kitchen



1. Matthias Hein of Hein-Troy
2. Juri Troy of Hein-Troy
3. Bartosz Haduch of Narchitektura
4. Luis Suárez Mansilla of Suárez Santos
5. Michel Tombal of Rocha Tombal
6. Harald Thaulow of Aas Thaulow
7. Atle Aas of Aas Thaulow
8. Douglas Carson of Carson & Crushell
9. Jake Edgley of Edgley Design
10. Maya Carni of Scenario
11. Martin Saarinen of Frei + Saarinen
12. Joao Vieira Costa of OnOffice
13. Sándor Finta of Spora
14. Leon Rost of OnOffice
15. Adám Hatvani of Spora
16. Ricardo Guedes of OnOffice
17. Franck Dibon of Ramdam
18. Tibor Dékány of Spora
19. Sacha Marchal of Marchal Fürstenberger
20. Philippe Fürstenberger of Marchal Fürstenberger
21. Asier Santos Torres of Suárez Santos
22. Orsolya Vadász of Spora
23. Ran Ankory of Scenario
24. Barbara Frei of Frei + Saarinen
25. Rosaleen Crushell of Carson & Crushell

ARCHITECTS DIRECTORY 2010

How to showcase the world's best new talents? We asked 30 studios to come up with a conceptual house, urban or rural, to show us what they could do. Then invited them to a celebratory shoot at Shigeru Ban's Pompidou-Metz

PHOTOGRAPHY: JONATHAN DE VILLIERS ILLUSTRATIONS: ANDREW CLARK
WRITERS: JONATHAN BELL AND ELLIE STATHAKI

Divided between town and country, our 30 conceptual structures from our chosen practices are architectural provocations, each designed to make the best of its particular site. So when we photographed our architects, we needed a location that was equally striking. The Centre Pompidou-Metz, designed by Japanese architect Shigeru Ban and his regular French collaborator Jean de Gastines, opened its doors in May 2010, and at first glance looks like an architectural step away from its Beaubourg big brother. 'My ambition was to create a gathering space for people,' says Ban. 'We need to be making very practical museums, but at the same time create an interesting experience for the public.'

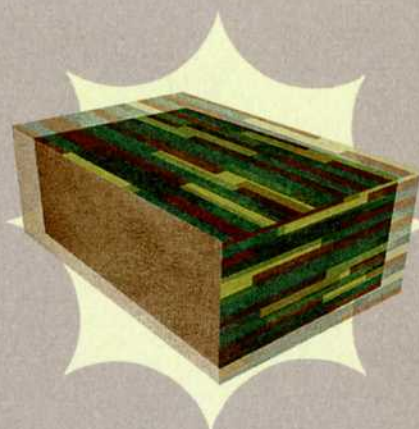
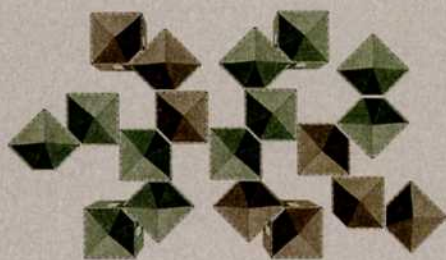
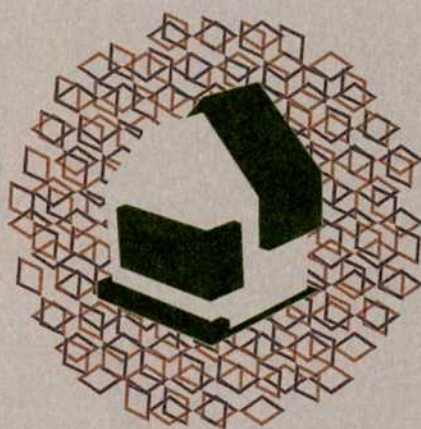
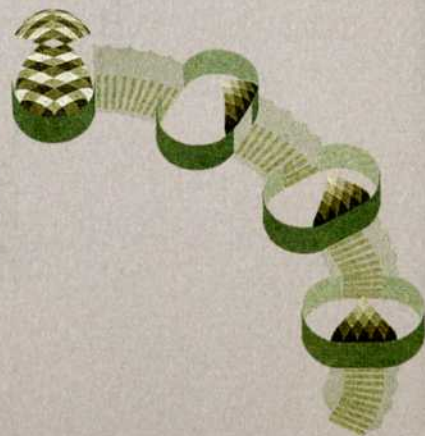
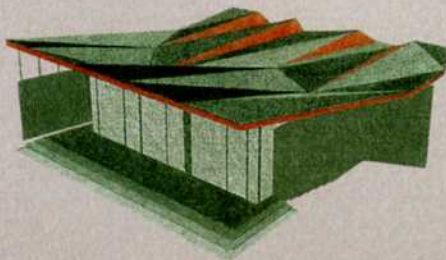
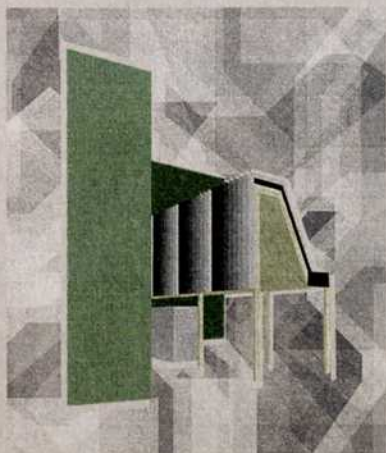
Looking rather intricate from the outside, a composition of smaller volumes covered by a wood-framed and Teflon-coated glass fibre membrane roof, the structure is actually very straightforward in its concept. 'There is strong geometry behind this design, so the calculations were easy,' explains Ban when asked about the roof's irregular shape. By stacking three long orthogonal gallery spaces and adding services and office space at the base of the complex, the architects framed some of the city's most iconic views; each of the diversely orientated gallery openings targets a different city landmark.

And what about the new Pompidou as a future landmark itself? The original characterised not only a particular Paris neighbourhood but also a whole architectural era. 'I didn't want to create an iconic structure without meaning or function,' says Ban. Nor was a specifically ecological building a goal for the architect. 'I hate the word "eco" – it has become such a fashion. I started working with recycled paper and cardboard in 1986. At that time nobody talked about green architecture, sustainability. These are important, but many people use these words without knowing their real meaning. I never use these concepts as a strategy for design.'

It may be aesthetically different from its Parisian counterpart, but the new Pompidou shares some of the original's qualities: transparency, contemporary technologies and material, and structural clarity. The Pompidou-Metz launched with a show of more than 600 works entitled 'Masterpieces?', an appropriately thorough exploration of a tag often attached to the original Pompidou. It took a while to get a measure of Piano and Rogers' building, though. And it will be a while before we get to grips with what Ban has done with the sequel. www.shigerubanarchitects.com; www.centrepompidou-metz.fr







OWEN AND VOKES **AUSTRALIA**

www.owenandvokes.com

Paul Owen and Stuart Vokes established their Brisbane practice in 2003 and work mostly in the context of Australian suburbia. Their country house design, Pompom Farmhouse, is outlined by a series of masonry walls, which mark out its territory. These walls, low tech and simple, create spaces for all the necessary functions, from living and resting to gardening and outdoor living. The structure is intended to be light, modular and factory-constructed, but also fully informed by the surrounding landscape in terms of its orientation and shape.

HEIN-TROY **AUSTRIA**

www.hein-troy.at

Matthias Hein and Juri Troy established separate practices in Bregenz in 2002 and Vienna in 2003 respectively. Although they maintain their own offices, in 2006 they merged to form Hein-Troy. Sited in a cornfield in Anif, equidistant between the architects' two offices, Staggered House is made up of a combination of open and closed spaces. Covered by climbing plants, which transform the house into a living green sculpture, the open part acts as a skylight in winter, allowing light to come in, and as shade in summer, protecting the interior from the sun.

DIETER JANSSEN **CANADA**

www.dieterjanssen.com

Dieter Janssen has been the director of his Toronto-based studio, DJA, since 1999. Set on a breathtaking location at the edge of Lake Erie, Janssen's Second Sky house features a wavy roof, prompting a play of light and shadow inside. The building uses a green roof water system, reclaimed components sourced from condominium sales centres, and recycled materials from a nearby quarry. The lightweight structure's interior layout is as simple as it gets, with two partition walls, also doubling as storage space, defining the house's main areas.

JOSÉ ULLOA DAVET AND DELPHINE DING **CHILE**

jud-arq.blogspot.com; www.delphineding.com

José Ulloa Davet and Delphine Ding have collaborated since 2007 and divide their time between Santiago, Barcelona and Switzerland. Their design for us, Temporary Social Cells For Emergency, is intended for use following a disaster, such as the earthquakes to which Chile is prone. A hostel for up to seven families is constructed from a basic unit that includes cells for common uses, such as bathrooms, kitchens and living areas. Low cost, easily deployable and able to preserve social structures in a time of crisis, TSCFE is both poetic and functional.

CARSON & CRUSHELL **IRELAND**

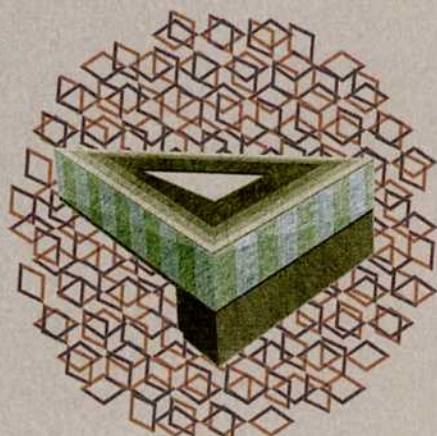
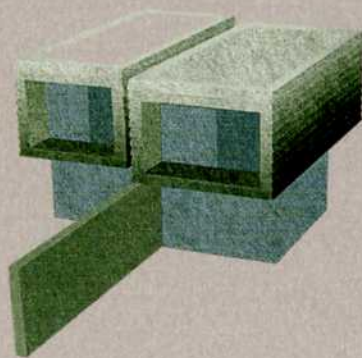
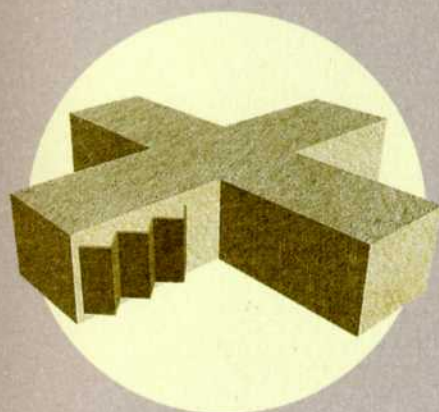
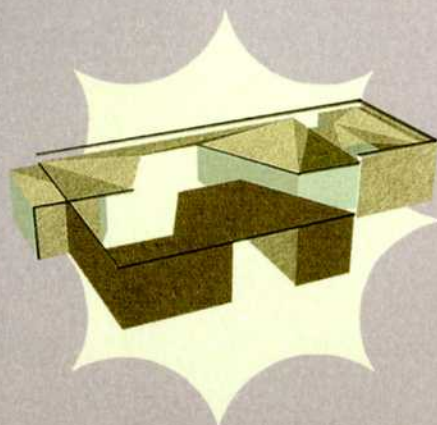
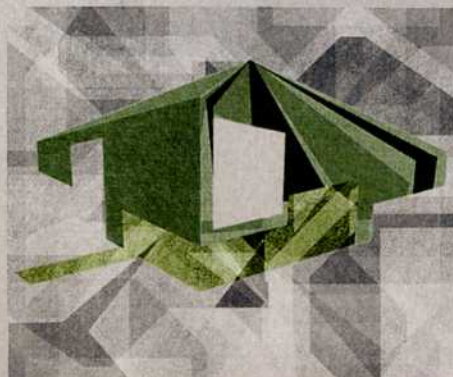
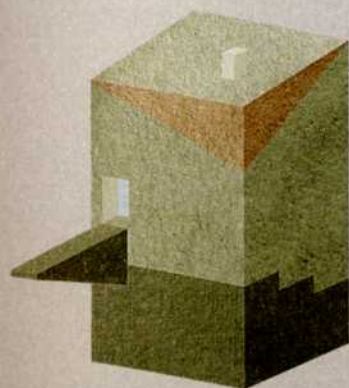
www.carsonandcrushell.com

Douglas Carson and Rosaleen Crushell set up their Dublin practice in 2003 following their graduation from University College Dublin. With their ccOracle for the Future, the architects redesigned the classic canalboat to combine the benefits of city living with the opportunity for rural escape. The clever design is planned to conserve heat (the structure is lined with fibreglass, tatami matting and wool rugs) and ease travel (the boat's hubs are linked by tunnels that flex and bend as it moves); it also features hidden storage space and multifunctional areas.

AXELROD ARCHITECTS **ISRAEL**

www.axelrodarchitects.com

Axelrod was established in 2000 by Irit Axelrod and has offices in Tel Aviv and San Francisco. Unfolding House is a clean, cubic steel and glass structure, with a simple and flexible interior: an open plan with only one permanent partition and two sliding walls, which divide the house's 100 sq m into a two-bedroom house. The structure's steel skin is applied as a second layer, over the main glass one, allowing for internal climate control, while the external panels can be folded or unfolded, making the house easily adaptable and responsive to the owner's needs.



AAS THAULOW NORWAY

www.aasthauLOW.no

Photographer-turned-architect Atle Aas teamed up with Harald Thaulow to establish their Oslo practice last year. Hill House, located in a beautiful spot, on a steep slope overlooking the Valdres Valley, north of Oslo, is a simple orthogonal structure with one door and one window. Built from, and heated by, locally sourced, renewable materials, it's made of solid wood, using low-grade timber that would otherwise go to waste. Only the foundation and basement is dry masonry, making use of the existing stones found on the site.

SUÁREZ SANTAS SPAIN

www.suarezsantas.com

Luis Suárez Mansilla and Asier Santos Torres, graduates of the University of Navarra School of Architecture, established their firm in Bilbao in 2003, and have already received awards in more than 15 national and international competitions. X House, located in northern Spain on a Biscay clifftop facing the Cantabrian Sea, is blessed with stunning views, of which the architects took full advantage. Designed to highlight the link between architecture and its user, the house is low, graphic and horizontally planned, opening up in all directions.

FREI + SAARINEN SWITZERLAND

www.freisaarinen.ch

Barbara Frei and Martin Saarinen worked for practices such as Erick van Egeraat and Herzog & de Meuron before setting up on their own in Zürich in 2003. For us, Frei and Saarinen chose to work on a farmhouse, Rural House, confronting the challenges and potential of sharing a home with livestock. Integrating the animals' presence into the house design, they used cows' body warmth to help heat the rooms. The house was seen as 'a domesticated piece of nature', working to reinforce the inhabitants' natural experience, but it is also, primarily, a piece of art.

EDGLEY DESIGN UK

www.edgleydesign.co.uk

Architectural Association graduate Jake Edgley set up his London practice in 2004 and has built up a strong portfolio of residential commissions. Designed for a location in Wiltshire, UK, Plane House's absence of window frames accentuates its openness, giving the impression of a ground floor united with the scenery. Placing kitchen and dining areas to the east and living spaces to the west makes the most of the garden views. The house is designed to be fully self-built using local materials, and it can be adapted to different sites and scales.

MOTO DESIGNSHOP US

www.motodesignshop.com

University of Pennsylvania graduates Adam Montalbano and Roman Torres established their multi-disciplinary firm in Philadelphia in 2003. Designed as an artist's retreat, Cocoon House was conceived as two structures that intertwine, creating a spatial dialogue. The structure features a wooden screen, which can be pulled away from the house, revealing the shoreline location's expansive views (and at the same time creating a shaded parking spot). The screen can then be pulled back when the owners are away, protecting the house when not in use.

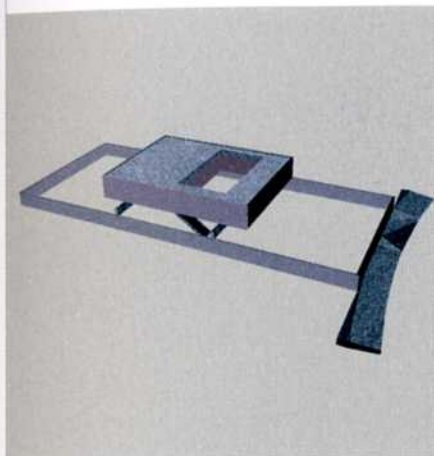
ZOKA ZOLA US

www.zokazola.com

Croatian Zoka Zola, a Zagreb University and Architectural Association graduate, set up practice in Chicago in 2002. Scalene House was designed with the playful use of the number three in mind; it sits on three columns, which hold three beams that hold three slabs. A triangular-shaped courtyard springs from the slabs' arrangement. The house sits lightly on the ground and the load-bearing columns allow for a light and free interior. Open to all directions, the structure also gets additional exposure to light and air via the courtyard.

X ARQUITECTOS ▼
ARGENTINA
www.x-arquitectos.com.ar

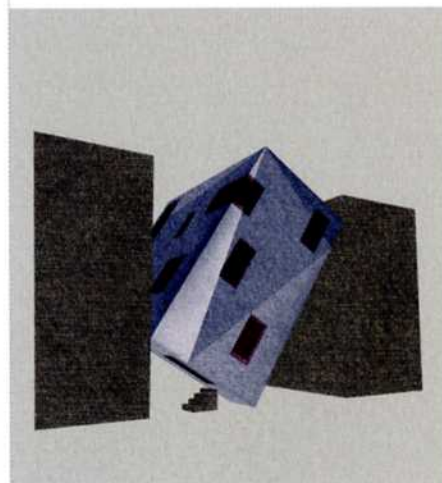
Ricardo Esteban Sargiotti and José Ignacio Santillán formed their Córdoba-based practice in 2003, united by their common passion for architectural education and practice. Designed as a form of manifesto for the country's current social and urban situation, particularly the phenomenon of gated communities, the firm's Virus House offers an ironic version of these private housing estates. X Arquitectos' design denounces these suburban districts, which initially developed for security reasons, but today seem only to promote, according to the architects, social segregation and alienation. 'Within this context, the situation for architects is really disheartening,' they say.


RORY HYDE ▼
AUSTRALIA
www.roryhyde.com

Following his graduation from RMIT University, Rory Hyde set up his Melbourne studio in 2005, but is currently based in Amsterdam. His design, Many Happy Returns, is a house that doubles as a social centre, thanks to a series of spatial interventions into the conventional streetscape. Hyde rearranged the traditional floorplan to create a stacked four-storey house bisected by a community garden and a public staircase; the space could be used for meetings or screenings, while small businesses could use its adjacent workshop. As its name suggests, the house gives back to its site, both through its response to the streetscape and community, and through the incorporation of a self-contained apartment.


NAJJAR & NAJJAR ▲
AUSTRIA
www.najjar-najjar.com

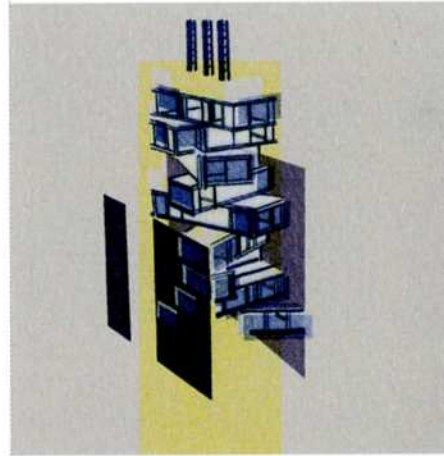
Established in Vienna in 1999, with offices now in Stuttgart and Beirut, Najjar & Najjar is run by brothers Karim and Rames. Tidal House is a floating building, part sculpture, part boat, intended as an urban riverside retreat that can be towed upstream to a more contemplative spot when the urge arises. It's a mollusc-like structure that opens and closes according to the surroundings. As the name suggests, the living environment reacts to the height of the tide; resting on the sea floor at low tide, open and accessible, the house rises with the waters and closes its protective shell, becoming a place that can only be reached by boat.


RAMDAM ▲
FRANCE
www.atelier-ramdam.com

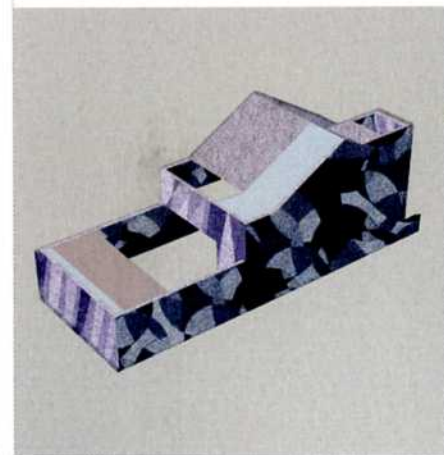
Founded in Paris by Germain Bouchon, Franck Dibon and Olivier Misichi in 2009, RAMDAM is a small, ideas-driven architectural practice. With a knowing nod to one of Le Corbusier's most celebrated conceptual ideas, the firm's Domino House is a deconstruction of the traditional terrace, featuring a monolithic block 'whose stability depends on the stability of its neighbours'. Set at an alarming angle, the idea is to evoke the sense of flux and change within the city, with the infill site playing a critical role. The canted voids created by the house's tipped rectangular form function as passageways, parking, small stores, cellars or storage.

SPORA ARCHITECTS ▼
HUNGARY
www.sporaarchitects.hu

Tibor Dékány, Sándor Finta, Ádám Hatvani and Orsolya Vadász set up this Budapest-based practice in 2002 and are currently hard at work on the city's Metro 4 underground line. Their design for us, Weekend-City, is a blend of the traditional summerhouse with an urban site. Its cascading structure is designed to counter Budapest's proliferation of courtyard-centric dwellings and meagre apartments. 'The project combines the benefits of metropolitan and rural life,' the architects say. 'It would create a vertical village with criss-crossing terraces and gardens connected to each flat. The apartments are overrun by plants and everyone would have a small garden for growing fruit and vegetables.'

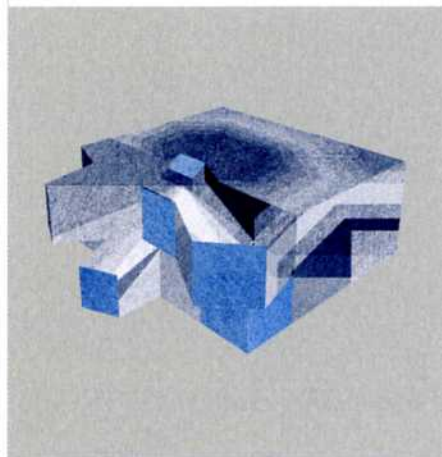

WALKER ARCHITECTS ▼
IRELAND
www.walkerarchitects.ie

Born into an architectural family (his father was a partner in the great Irish modernist practice Scott Tallon Walker), Simon Walker founded his firm in Dublin in 1998 after studying at University College Dublin. His Dublin Row House updates a common typology. 'Two residential units share a plot, yet both have access to the front and back of the site, and both are distributed over upper and lower levels,' says Walker. Designed to slot neatly into the many empty sites scattered around the mews and laneways of southside Dublin, the house represents the sense that qualities like sustainable design must become utterly integrated in new architecture, while the mix of old and new should be second nature.

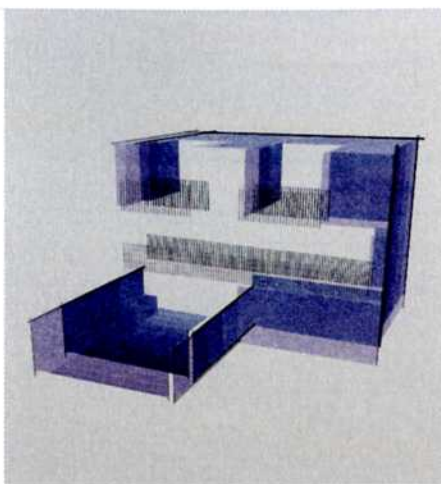
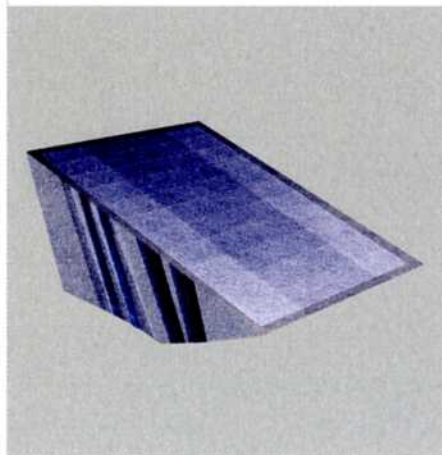


ROCHA TOMBAL ▼
NETHERLANDSwww.rocha.tombal.nl

FAUP graduate Ana Rocha and TU Delft graduate Michel Tombal left major roles at Delft-based Dutch megapractice Mecanoo to set up their joint practice in Amsterdam in 2006. The pair's Prinseneiland House, set in Amsterdam's Prinseneiland harbour extension, among the area's scrubby vegetation and post-industrial decay, is a low-impact house that maximises sustainability and solar gain. Arranged around a service nucleus (the kitchen and stairs), with the rest of the space open and flexible, much like the original brick warehouses that dot the surrounding landscape, the house's close relationship to nature is cemented by the use of recycled panels in the façade.

**NARCHITEKTURA ▼**
POLANDwww.narchitektura.pl

Bartosz Haduch founded his design group in Krakow in 2007 and is primarily concerned with the synergy between architecture and nature. Sheltering Sky House, inspired by Bernardo Bertolucci's 1990 film, is designed for the city of Djenné in Mali, which features traditional clay buildings. 'It's a hypothetical proposal for one of the film's main characters, Kit Moresby, after her husband's death,' says Haduch. With a fictional client in hand, the architects' wedge-shaped design is effectively a stage set, a void around which two floors of 'furniture walls' are placed, freeing up the internal space. The living space has just one window, a vast opening roof – 'to connect with the "sheltering sky".'

**JOHAN SUNDBERG ▲**
SWEDENwww.johansundberg.com

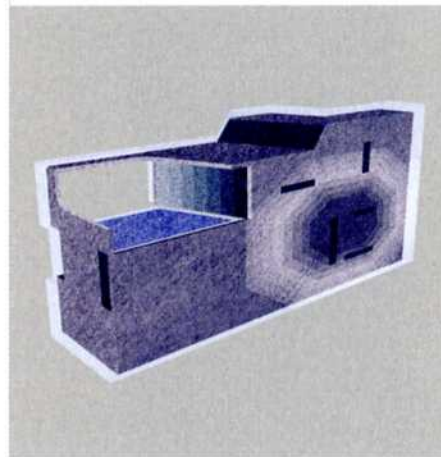
Johan Sundberg began his Malmö practice while still a student at the Lund School of Architecture. By the time he had graduated – and been nominated for a best debut award by *Architektur* – he was practically an established name. Urban Row-House is a proposal for a three-storey house for a site in Malmö's old town. Sundberg's design begins with a solid concrete ground floor and gradually becomes more open as it rises. The 'stuck-on' façade references the 18th and 19th century structures around it, but the new proposal uses glass, steel and timber panels that can be folded back to open the house up to the street if necessary.

**MARCHAL FÜRSTENBERGER ▲**
SWITZERLANDinfo@mfarchitekten.ch

Sacha Marchal and Philippe Fürstenberger met at the Basel offices of Herzog & de Meuron before setting up their studio in 2006. Cityhouse is designed for a plot in the heart of Basel and tackles a site just 5m wide but 30m long, stretching between a commercial street and a residential one. The architects began by asking, 'What does living in the city mean?', concluding that today's city dweller considers the urban realm as an extension of their house, spending as much time, if not more, in the cinema, gallery or restaurant as the living room or kitchen. Their suggestion is this cave-like form, a throwback to the house as just basic shelter.

SCENARIO ARCHITECTURE ▼
UKwww.scenarioarchitecture.com

Young London-based practice Scenario was established in 2007 by Architectural Association alumni Ran Ankory and Maya Carni. Considering themselves 'spatial problem solvers', they boast a skill set that includes digital visualisation, construction work and even blacksmithing. Their design, A House For Two, is intended for a young professional couple living in north London. The slim terraced structure slots into an infill site, its form notched at critical junctures so as to allow 'specific sun and daylight patterns', illuminating daily life and aiding environmental performance. The house inverts traditional living patterns, with a garden at the front first floor level and a skewed roof for better solar panel angling.

**OBRA ARCHITECTS ▼**
USwww.obraarchitects.com

Obra was founded in 2000 in New York by Pablo Castro and Jennifer Lee, who had previously worked for Steven Holl and Simon Ungers. Twisted Tower is a proposal for infill housing in New York's Hell's Kitchen and explores the city's 'singular urban poetry of the tall and the uneven'. Set adjoining the Amtrak lines running into Penn Station, the proposal is for a set of three 14-storey apartment towers; slender twisting forms with south-facing walls of steel louvres over a concrete structure. The way the towers integrate with the ground creates external space for the building's occupiers, while the northern outlook engages with the 'kinetic panorama' of high speed trains leaving the city.



For detailed drawings
full biographies and
the remaining studios
architecture studios
www.wallpaper.com